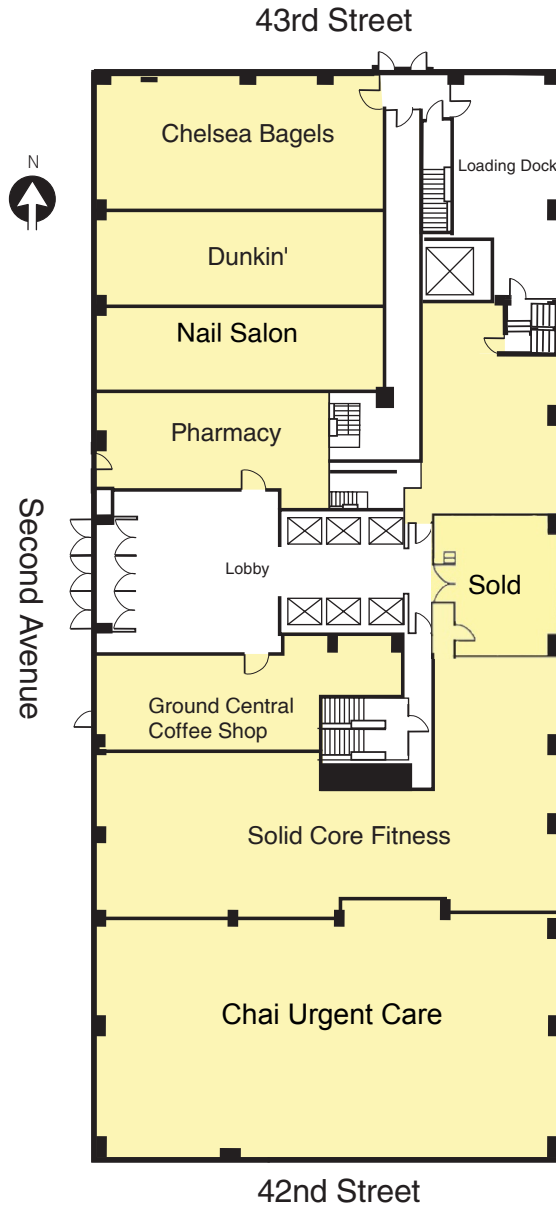




800 SECOND AVENUE | NEW YORK, NEW YORK

PROPERTY OVERVIEW

- Prime retail directly on 2nd Avenue between 42nd and 43rd Streets
- Surrounded by high density Midtown Manhattan area featuring retail, offices, restaurants, tourists, and fitness centers.
- Walking distance from United Nations and Grand Central Terminal
- Outstanding visibility on 2nd Avenue



CONTACT: Michael Robbins | T: 212-951-3828 | F: 212-545-1355 | mrobbins@pihc.com

All areas and dimensions are approximate. This plan is intended for identification purposes only and is not to be deemed a representation by Landlord as to the accuracy or square footage.

