



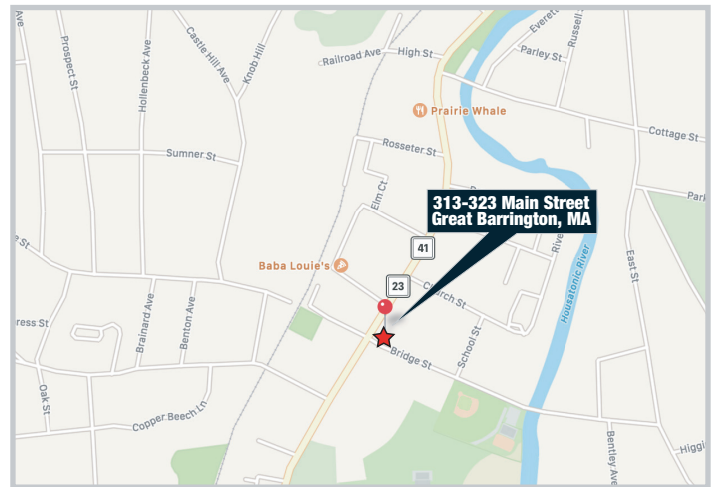
# 313-323 MAIN STREET

# GREAT BARRINGTON, MASSACHUSETTS



### PROPERTY OVERVIEW

- Landmark building located at the prime corner of Main Street and Bridge Street in the heart of Great Barrington, MA
- Ground level retail spaces house some of the Berkshires' most well-known retail stores. The frontage on Main Street provides high foot traffic in all seasons, and the building is nearby all of the Berkshires' most frequented dining, shopping, theater, park, and farmers market
- 2nd and 3rd floors provide some of the only Class A office space in the Berkshires (The Berkshire Block)
- Reserved Permit Parking for Tenants



| DEMOGRAPHICS        | 1 MILE   | 7 MILES   | 10 MILES  |
|---------------------|----------|-----------|-----------|
| ▪ Population        | 2,878    | 13,009    | 22,490    |
| ▪ Average HH Income | \$83,867 | \$100,147 | \$103,189 |
| ▪ Total HH          | 1,367    | 5,879     | 10,201    |
| ▪ Median Age        | 47.3     | 50.8      | 50.8      |

### DAILY TRAFFIC COUNTS

|                                |            |
|--------------------------------|------------|
| ▪ Main Street at Bridge Street | 14,337 VPD |
|--------------------------------|------------|

CONTACT: Glenn Langenback | T: 413-236-5957 | F: 413-236-5731 | glenn@pihc.com

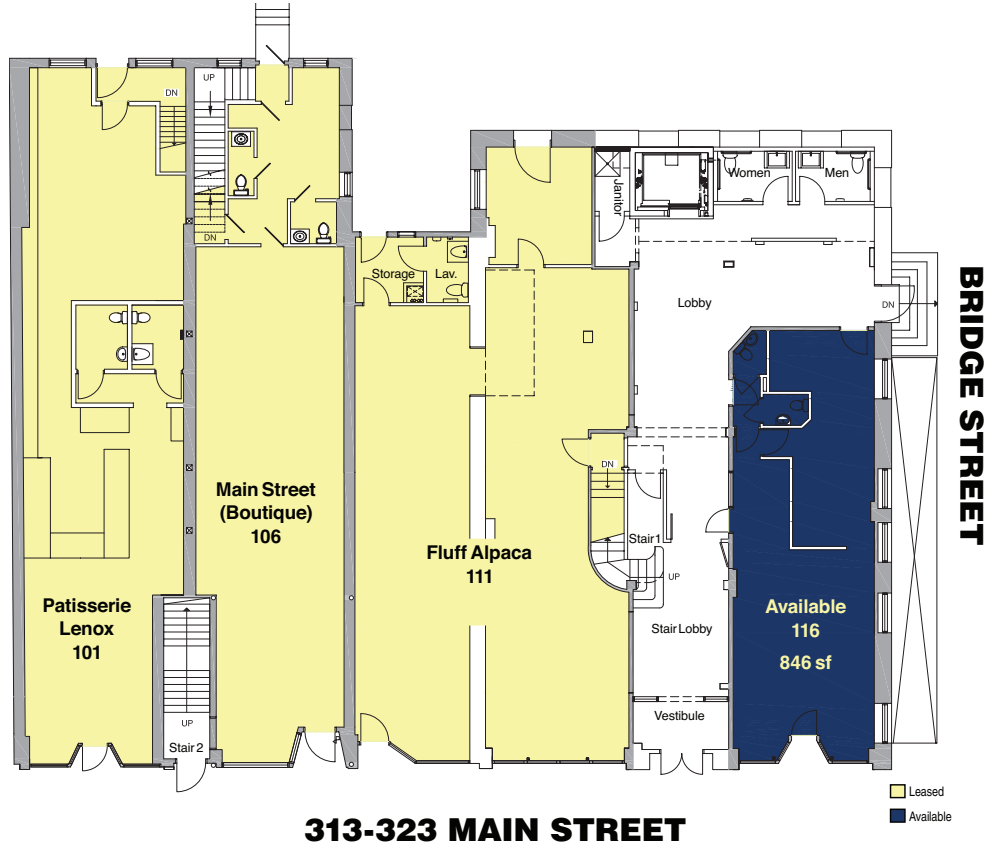
Philips International | 40 Cutter Mill Road, Suite 405, Great Neck, NY 11021





# 313-323 MAIN STREET

## GREAT BARRINGTON, MASSACHUSETTS



06/21



**CONTACT: Glenn Langenback** | T: 413-236-5957 | F: 413-236-5731 | glenn@pihc.com

All areas and dimensions are approximate. This plan is intended for identification purposes only and is not to be deemed a representation by Landlord as to the accuracy or square footage.

